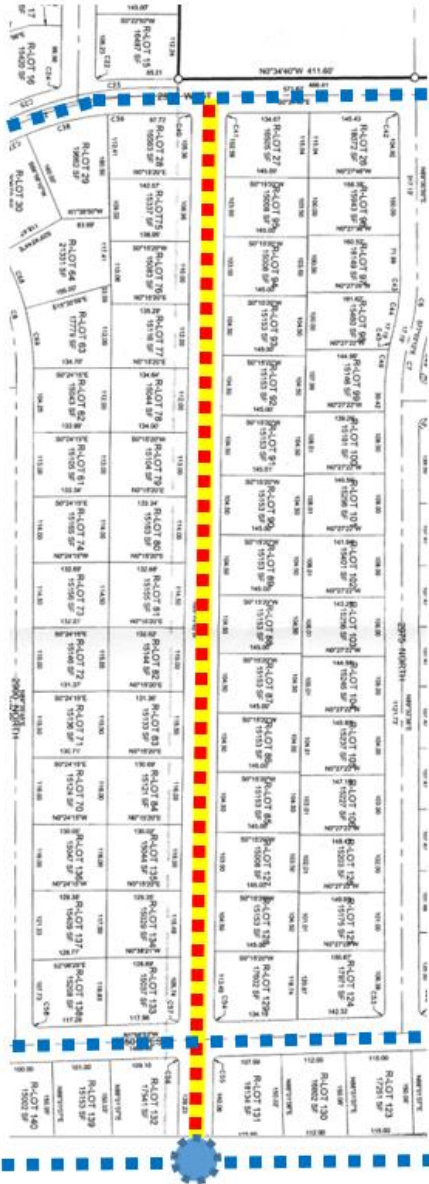
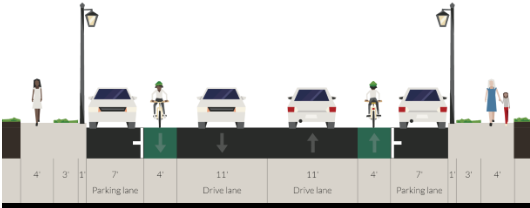


# Sugar Hart (2950 N) Corridor



**BRIEF DESCRIPTION:** The planned east-west segment is 2950 N which begins on 2575 W and continues eastward to the Willard Canal.

2950 N will be wide enough (66 feet) to accommodate bicycle lanes and vehicular street parking on both sides.

**RECOMMENDED CORRIDOR TYPE:**  
Category 3: Marked Shared Road Bikeway

**RECOMMENDED CORRIDOR USES:**  
Bicycles shared with vehicles, Pedestrians on sidewalks

**CORRIDOR CONNECTIONS:** Hart Meadows (2575 W), Willard Canal. Also, there is a that a bridge will be constructed across the Willard Canal that would connect 2950 N with a land parcel on the east side of the canal that is planned for mixed use

**AREAS OF CONCERN** This road will be a major north south route for vehicles. Incorporating bike lanes between street side parking and vehicle travel lanes will be new to the residents, education will be needed.

**LEVEL OF DIFFICULTY:** Easy

**APPROXIMATE CORRIDOR LENGTH:**  
0.8 mile

**RESPONSIBLE ENTITIES:** Farr West City

**EXISTING CONDITIONS** undeveloped land, subdivision planned.

