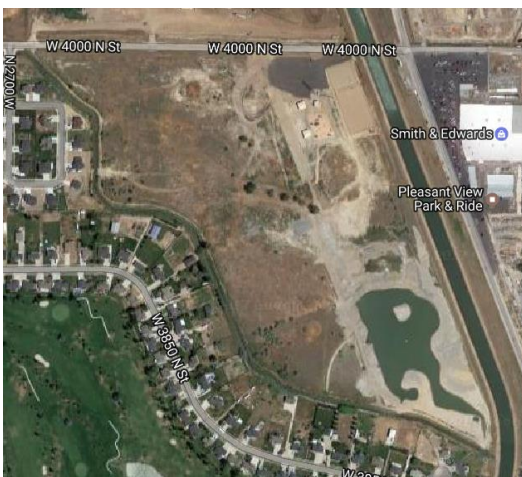


# Park Plaza Canal Trail



**BRIEF DESCRIPTION:** This Pedestrian pathway would run from Smith Family Park to 4000 N along the 'Western Drain'. It would connect a park area containing trails to a proposed trail for pedestrians & equestrians. It would also run behind homes in the Park Plaza subdivision.

**RECOMMENDED CORRIDOR TYPE:** Trail Bikeway

**RECOMMENDED CORRIDOR USES:** Pedestrians, Off-road Bicycles

**CORRIDOR CONNECTIONS:** 4000 N., Smith Family Park Trails, Two (2) neighborhood connections

**AREAS OF CONCERN:** With open water on one side, backyards on the other, safety & security elements need to be considered

**LEVEL OF DIFFICULTY:** Easy

**APPROXIMATE CORRIDOR LENGTH:** ~3200' total

**RESPONSIBLE ENTITIES:** Farr West

**EXISTING CONDITIONS:** Undeveloped canal maintenance road

